

# Rosefield Solar Farm

## Works Plans

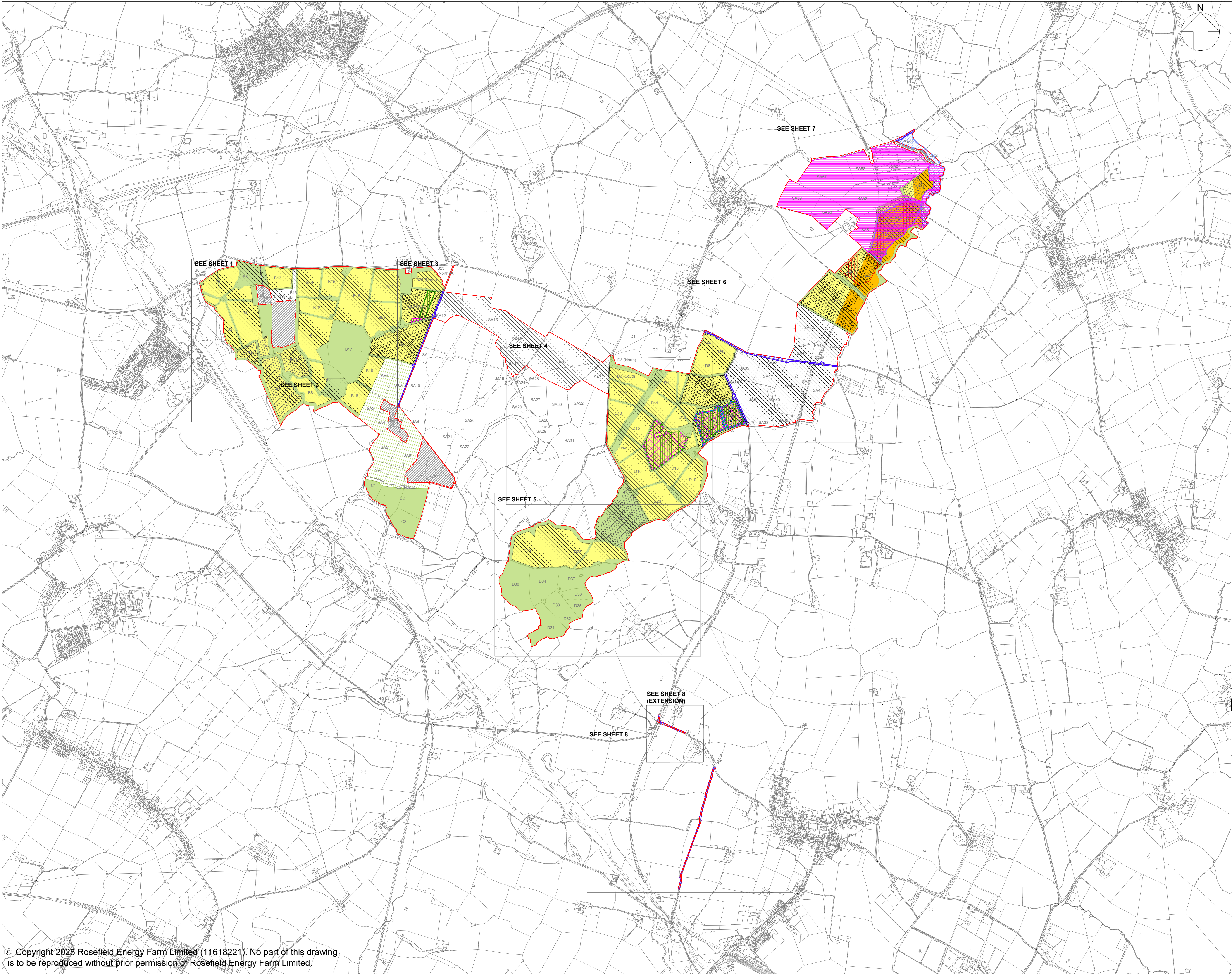
APFP Regulation Reg 5(2)(i)  
Planning Act 2008  
Infrastructure Planning  
(Applications: Prescribed Forms  
and Procedure) Regulations 2009  
EN010158/APP/2.3.2  
Revision 02  
October 2025  
Rosefield Energyfarm Limited



## 2.3.2 Works Plans

Drawing number	Revision number	Drawing title	Scale	Reason For Revision
2.3.2	02	Works Plans – Key Plan	1:15,000 (Key Plan) @ A1	Updated the north point to include a letter N. Updated labelling. Red line bleed fixed.
2.3.2	02	Works Plans – Sheet 1 of 8	1:2,500 @ A1	Updated the north point to include a letter N. Updated labelling. Red line bleed fixed.
2.3.2	02	Works Plans – Sheet 2 of 8	1:2,500 @ A1	Updated the north point to include a letter N. Updated labelling. Red line bleed fixed.
2.3.2	02	Works Plans – Sheet 3 of 8	1:2,500 @ A1	Updated the north point to include a letter N. Updated labelling. Red line bleed fixed.
2.3.2	02	Works Plans – Sheet 4 of 8	1:2,500 @ A1	Updated the north point to include a letter N. Updated labelling. Red line bleed fixed.
2.3.2	02	Works Plans – Sheet 5 of 8	1:2,500 @ A1	Updated the north point to include a letter N. Updated labelling. Red line bleed fixed.
2.3.2	02	Works Plans – Sheet 6 of 8	1:2,500 @ A1	Updated the north point to include a letter N. Updated labelling. Clarification of overlapping Works areas. Red line bleed fixed.
2.3.2	02	Works Plans – Sheet 7 of 8	1:2,500 @ A1	Updated the north point to include a letter N. Updated labelling. Clarification of overlapping Works areas. Red line bleed fixed.
2.3.2	02	Works Plans – Sheet 8 of 8	1:2,500 @ A1	Updated the north point to include a letter N. Updated labelling. Sheet extents updated. Red line bleed fixed.





**LEGEND:**

- Order Limits
- Areas outside the Order Limits
- Work No. 1  
Ground-mounted Solar PV Generating Station  
(Up to 3.5m)
- Work No. 1  
Ground-mounted Solar PV Generating Station  
(Up to 4.5m. Accounting for Flood Areas)
- Work No. 2A  
Rosefield Substation Compound
- Work No. 2B  
Abnormal Indivisible Load Corridor
- Work No. 3A  
Satellite Collector Compounds
- Work No. 3B  
Satellite Collector Compound Transformer
- Work No. 4  
Battery Energy Storage System (BESS)
- Work No. 5  
Main Collector Compound
- Work No. 6  
Grid Connection Cabling Corridor
- Work No. 7  
Interconnecting Cabling Corridor (s)
- Work No. 8A  
Primary Temporary Construction and Decommissioning Compounds
- Work No. 8B  
Secondary Temporary Construction and Decommissioning Compounds
- Work No. 9  
Highway Works
- Work No. 10A  
Green and Blue Infrastructure
- Work No. 10B  
Internal access to mitigation areas only

**NOTES:**

- Ordnance Survey (OS) MasterMap data adopted as the drawing base map.
- The location of features shown are indicative only. Exact locations to be confirmed on site.
- Additional features may be present on site that have not been identified on the OS MasterMap data.
- The Works Plans show the spatial extent of the authorised development, which are described in Schedule 1 (Authorised Development) to the draft Development Consent Order. The Works Plans should be read in conjunction with the draft Development Consent Order and other plans and documents to be certified by it.
- The Works Plans are drawn to OS MasterMap data and Land Registry boundaries. In some locations the Land Registry boundaries differ from the OS MasterMap data which results in Limits of Deviation and/or the Order Limits not aligning with the line work shown on the base map.
- The Works Plans show some works taking place in combination with each other on the same area of land. Within the combined Limits of Deviation for these works the Applicant seeks authorisation for any combination of those Work Nos. shown within that Limit of Deviation (including on insets).
- Where the Order Limits overlap with works, it is assumed that the spatial extent of works extends to the outer edge of the Order Limits.

02	OCT 2025	UPDATES FOLLOWING S51 ADVICE	LDA	LDA	EDF
01	SEPT 2025	DCO SUBMISSION	LDA	LDA	EDF
REVISION	DATE	DESCRIPTION	DRAWN	CHECKED	APPROVED

**Rosefield Solar Farm**

**Rosefield Solar Farm**

DOCUMENT:  
**APPLICATION DRAWINGS FOR APPROVAL**

REGULATION 5(2)(j))

DRAWING TITLE:  
**WORKS PLANS KEY PLAN**

PIN REFERENCE NUMBER:  
EN010158/APP/2.3.2

REVISION:  
**02**

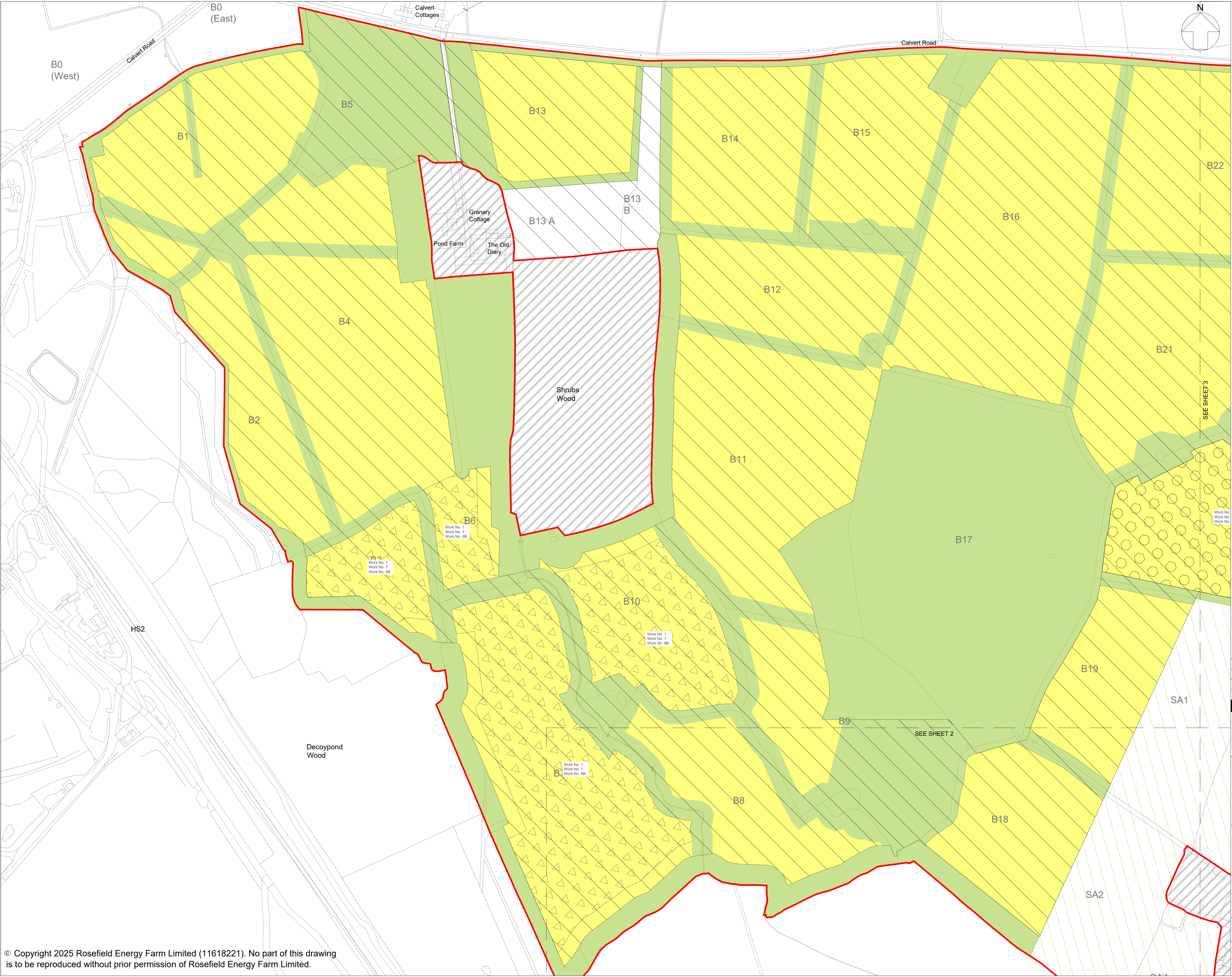
DATE:  
OCT 2025

DRAWN:  
LDA

SCALE:  
1:15,000 at A1

SCALE BAR:  
0 1km





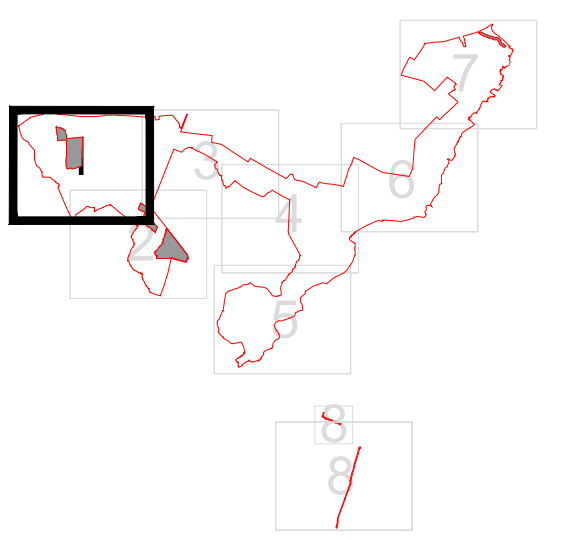
**LEGEND:**

- Order Limits
- Areas outside the Order Limits
- Work No. 1 Ground-mounted Solar PV Generating Station (Up to 3.5m)
- Work No. 1 Ground-mounted Solar PV Generating Station (Up to 4.5m. Accounting for Flood Areas)
- Work No. 2A Rosefield Substation Compound
- Work No. 2B Abnormal Indivisible Load Corridor
- Work No. 3A Satellite Collector Compounds
- Work No. 3B Satellite Collector Compound Transformer
- Work No. 4 Battery Energy Storage System (BESS)
- Work No. 5 Main Collector Compound
- Work No. 6 Grid Connection Cabling Corridor
- Work No. 7 Interconnecting Cabling Corridor (s)
- Work No. 8A Primary Temporary Construction and Decommissioning Compounds
- Work No. 8B Secondary Temporary Construction and Decommissioning Compounds
- Work No. 9 Highway Works
- Work No. 10A Green and Blue Infrastructure
- Work No. 10B Internal access to mitigation areas only

**NOTES:**

1. Refer to key plan for notes.

**KEY PLAN:**



02	OCT 2025	UPDATES FOLLOWING S51 ADVICE	LDA	LDA	EDF
01	SEPT 2025	DICO SUBMISSION	LDA	LDA	EDF
REVISION	DATE	DESCRIPTION	DRAWN	CHECKED	APPROVED

Rosefield Solar Farm



DOCUMENT:  
**APPLICATION DRAWINGS  
FOR APPROVAL**

REGULATION 5(2)(j)

DRAWING TITLE:  
**WORKS PLANS  
SHEET 1 OF 8**

PIN REFERENCE NUMBER:  
EN010158/APP/2.3.2

REVISION:  
**02**

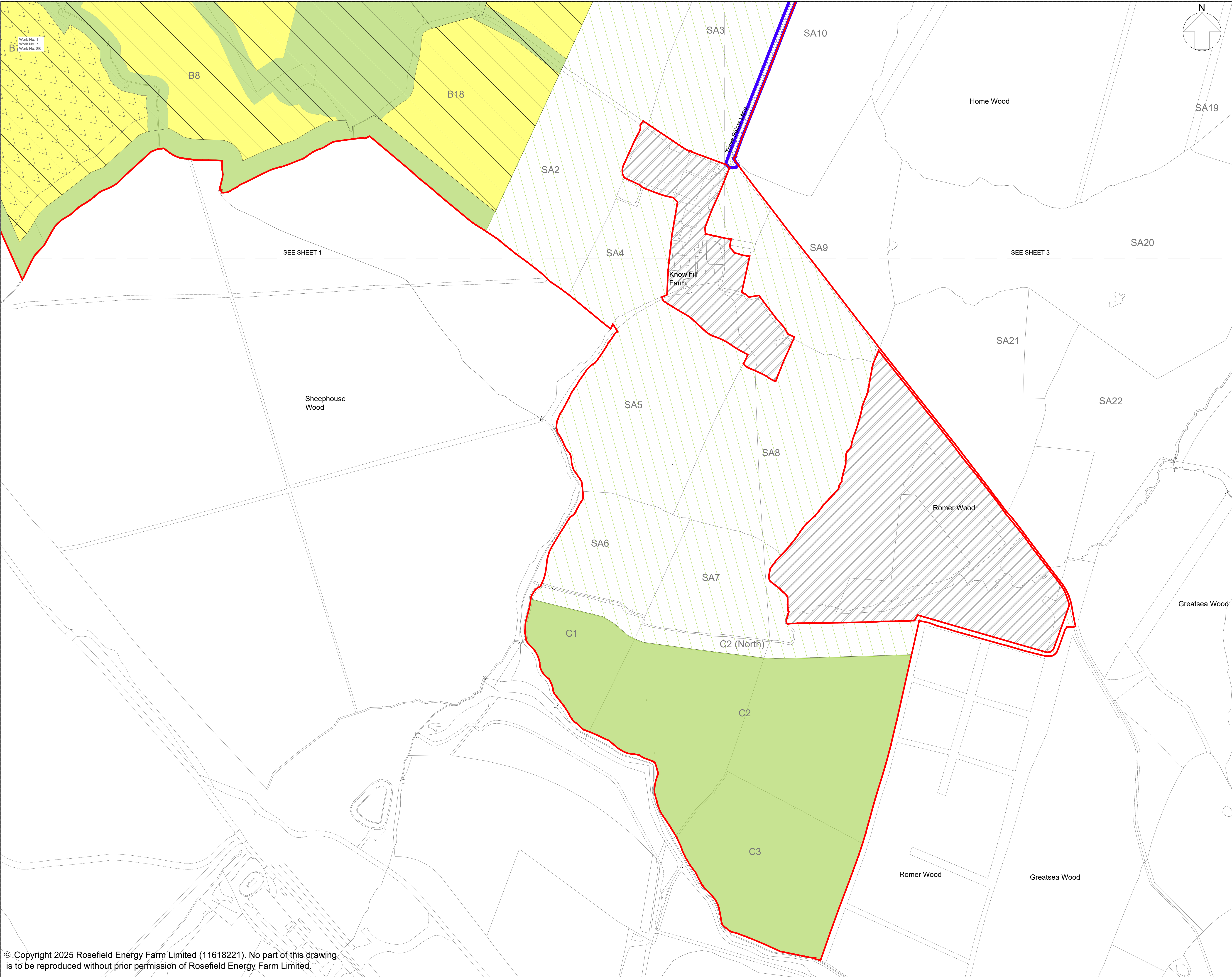
DATE:  
OCT 2025

DRAWN:  
LDA

SCALE:  
1:2,500 at A1

SCALE BAR:  
0 100m





**LEGEND:**

- Order Limits
- Areas outside the Order Limits
- Work No. 1 Ground-mounted Solar PV Generating Station (Up to 3.5m)
- Work No. 1 Ground-mounted Solar PV Generating Station (Up to 4.5m. Accounting for Flood Areas)
- Work No. 2A Rosefield Substation Compound
- Work No. 2B Abnormal Indivisible Load Corridor
- Work No. 3A Satellite Collector Compounds
- Work No. 3B Satellite Collector Compound Transformer
- Work No. 4 Battery Energy Storage System (BESS)
- Work No. 5 Main Collector Compound
- Work No. 6 Grid Connection Cabling Corridor
- Work No. 7 Interconnecting Cabling Corridor (s)
- Work No. 8A Primary Temporary Construction and Decommissioning Compounds
- Work No. 8B Secondary Temporary Construction and Decommissioning Compounds
- Work No. 9 Highway Works
- Work No. 10A Green and Blue Infrastructure
- Work No. 10B Internal access to mitigation areas only

**NOTES:**

1. Refer to key plan for notes.

**KEY PLAN:**

02	OCT 2025	UPDATES FOLLOWING S51 ADVICE	LDA	LDA	EDF
01	SEPT 2025	DICO SUBMISSION	LDA	LDA	EDF
REVISION	DATE	DESCRIPTION	DRAWN	CHECKED	APPROVED

**Rosefield Solar Farm**

**DOCUMENT:**

**APPLICATION DRAWINGS FOR APPROVAL**

**REGULATION 5(2)(j)**

**DRAWING TITLE:**  
**WORKS PLANS**  
**SHEET 2 OF 8**

PIN REFERENCE NUMBER:  
EN010158/APP/2.3.2

REVISION:  
**02**

DATE:  
OCT 2025

DRAWN:  
LDA

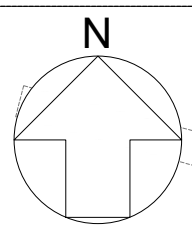
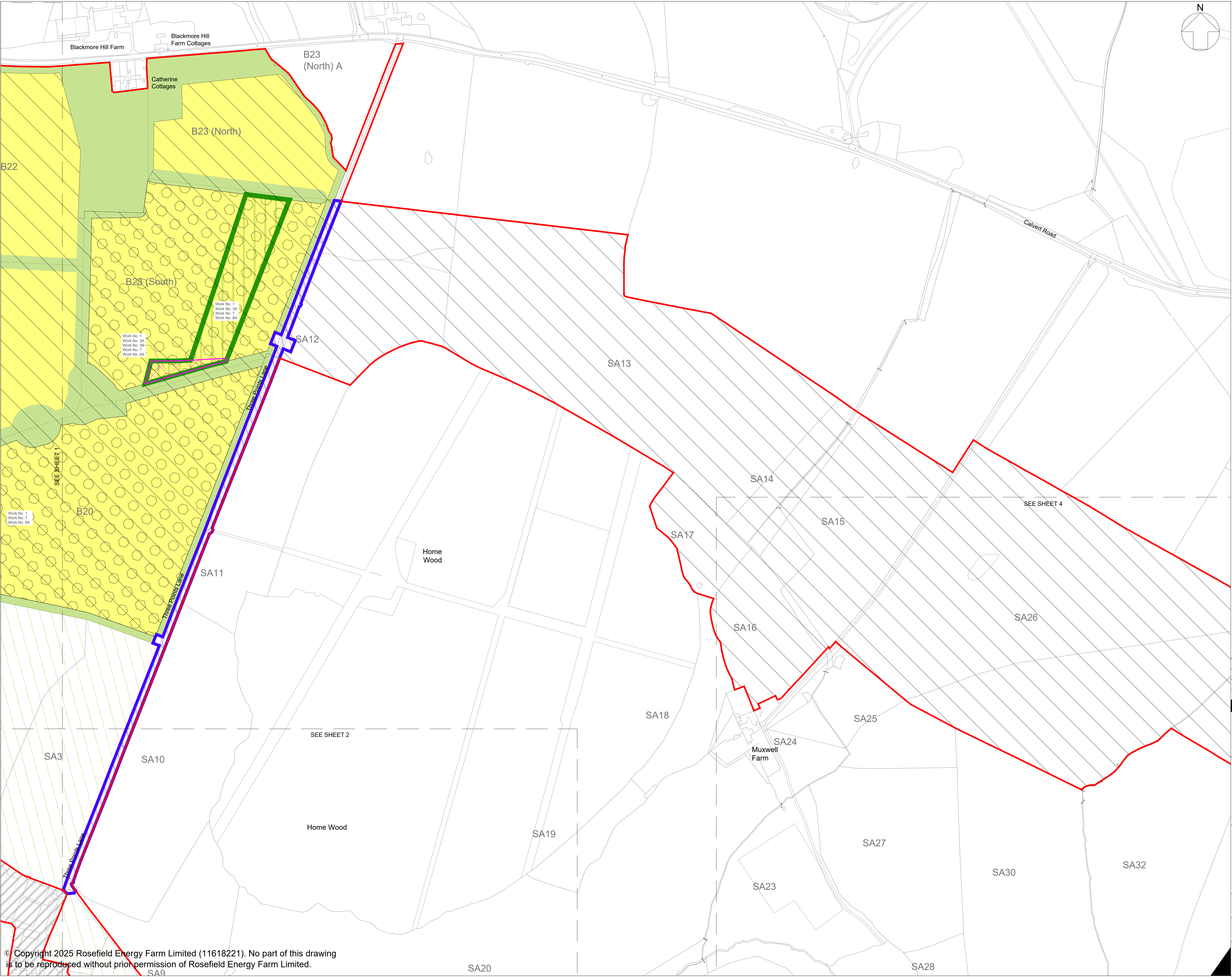
SCALE:  
1:2,500 at A1

SCALE BAR:

© Copyright 2025 Rosefield Energy Farm Limited (11618221). No part of this drawing is to be reproduced without prior permission of Rosefield Energy Farm Limited.

This drawing may contain: Ordnance Survey material by permission of Ordnance Survey on behalf of the Controller of His Majesty's Stationery Office © Crown Copyright 2024. All rights reserved. Reference number 0100031673  
OS Open data / © Natural England / © DEFRA / © DECC / © English Heritage. Aerial Photography - ESRI, DigitalGlobe, GEOEye, i-cubed, USDA FSA,USGD, AEX, Getmapping, Aerogrid, IGN,JGP,swisstopo, the GIS User Community



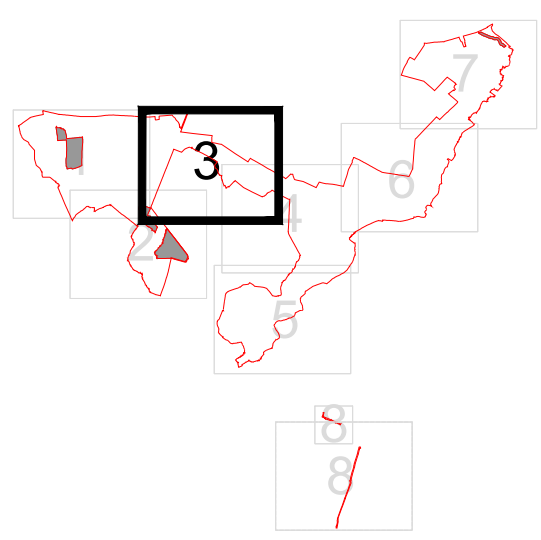


- LEGEND:**
- Order Limits
  - Areas outside the Order Limits
  - Work No. 1 Ground-mounted Solar PV Generating Station (Up to 3.5m)
  - Work No. 1 Ground-mounted Solar PV Generating Station (Up to 4.5m. Accounting for Flood Areas)
  - Work No. 2A Rosefield Substation Compound
  - Work No. 2B Abnormal Indivisible Load Corridor
  - Work No. 3A Satellite Collector Compounds
  - Work No. 3B Satellite Collector Compound Transformer
  - Work No. 4 Battery Energy Storage System (BESS)
  - Work No. 5 Main Collector Compound
  - Work No. 6 Grid Connection Cabling Corridor
  - Work No. 7 Interconnecting Cabling Corridor (s)
  - Work No. 8A Primary Temporary Construction and Decommissioning Compounds
  - Work No. 8B Secondary Temporary Construction and Decommissioning Compounds
  - Work No. 9 Highway Works
  - Work No. 10A Green and Blue Infrastructure
  - Work No. 10B Internal access to mitigation areas only

**NOTES:**

1. Refer to key plan for notes.

**KEY PLAN:**



02	OCT 2025	UPDATES FOLLOWING S51 ADVICE	LDA	LDA	EDF
01	SEPT 2025	DICO SUBMISSION	LDA	LDA	EDF

REVISION	DATE	DESCRIPTION	DRAWN	CHECKED	APPROVED
----------	------	-------------	-------	---------	----------

Rosefield Solar Farm



DOCUMENT:  
**APPLICATION DRAWINGS  
FOR APPROVAL**

**REGULATION 5(2)(j)**

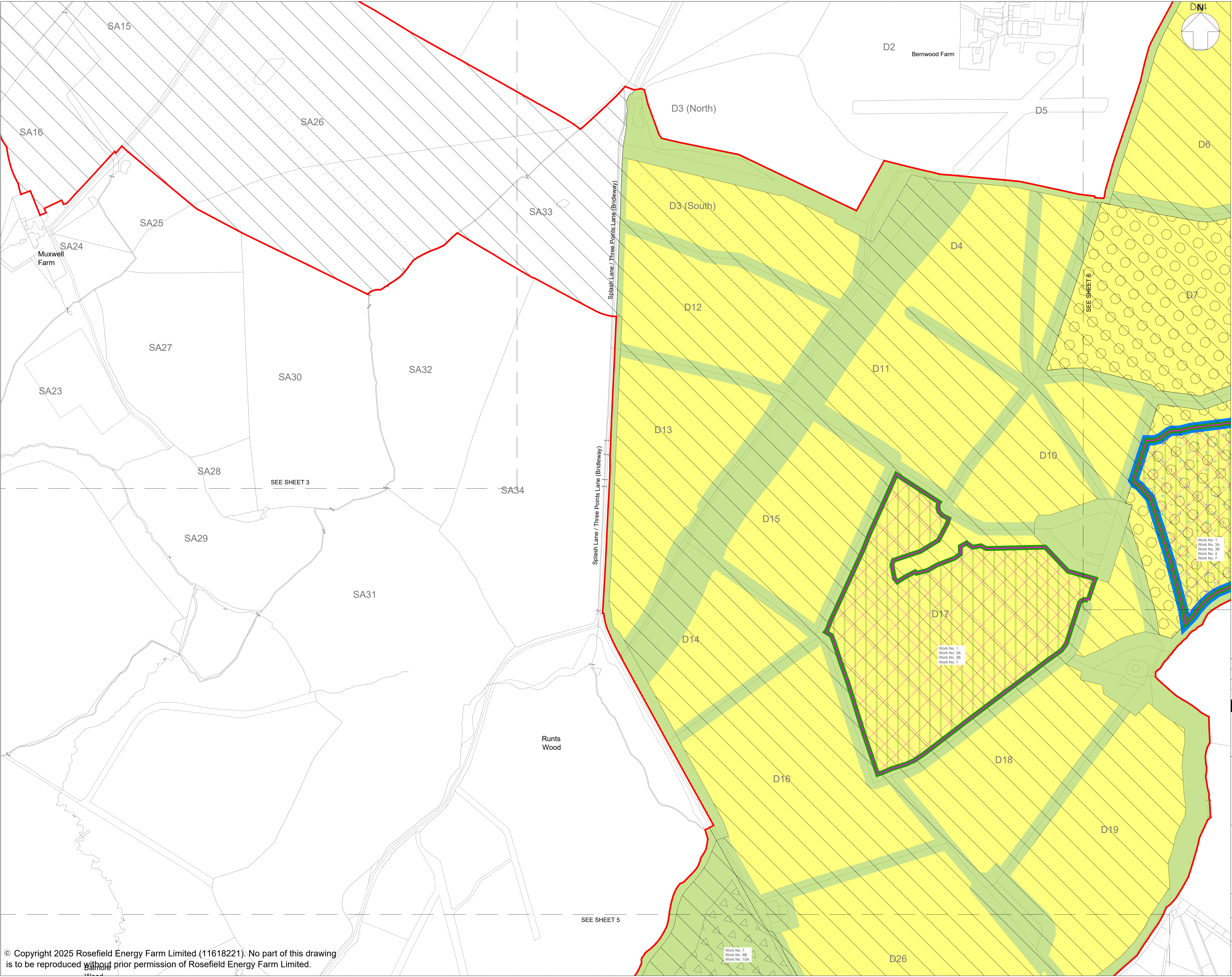
DRAWING TITLE:  
**WORKS PLANS  
SHEET 3 OF 8**

PIN REFERENCE NUMBER: EN010158/APP/2.3.2	REVISION: <b>02</b>
---	------------------------

DATE: OCT 2025	DRAWN: LDA	SCALE: 1:2,500 at A1
-------------------	---------------	-------------------------







**LEGEND:**

- Order Limits
- Areas outside the Order Limits
- Work No. 1 Ground-mounted Solar PV Generating Station (Up to 3.5m)
- Work No. 1 Ground-mounted Solar PV Generating Station (Up to 4.5m. Accounting for Flood Areas)
- Work No. 2A Rosefield Substation Compound
- Work No. 2B Abnormal Indivisible Load Corridor
- Work No. 3A Satellite Collector Compounds
- Work No. 3B Satellite Collector Compound Transformer
- Work No. 4 Battery Energy Storage System (BESS)
- Work No. 5 Main Collector Compound
- Work No. 6 Grid Connection Cabling Corridor
- Work No. 7 Interconnecting Cabling Corridor (s)
- Work No. 8A Primary Temporary Construction and Decommissioning Compounds
- Work No. 8B Secondary Temporary Construction and Decommissioning Compounds
- Work No. 9 Highway Works
- Work No. 10A Green and Blue Infrastructure
- Work No. 10B Internal access to mitigation areas only

**NOTES:**

1. Refer to key plan for notes.

**KEY PLAN:**

02	OCT 2025	UPDATES FOLLOWING S51 ADVICE	LDA	LDA	EDF
01	SEPT 2025	DICO SUBMISSION	LDA	LDA	EDF
REVISION	DATE	DESCRIPTION	DRAWN	CHECKED	APPROVED

Rosefield Solar Farm

DOCUMENT:

**APPLICATION DRAWINGS FOR APPROVAL**

**REGULATION 5(2)(j)**

DRAWING TITLE:

**WORKS PLANS**

**SHEET 4 OF 8**

PIN REFERENCE NUMBER: EN010158/APP/2.3.2

REVISION: **02**

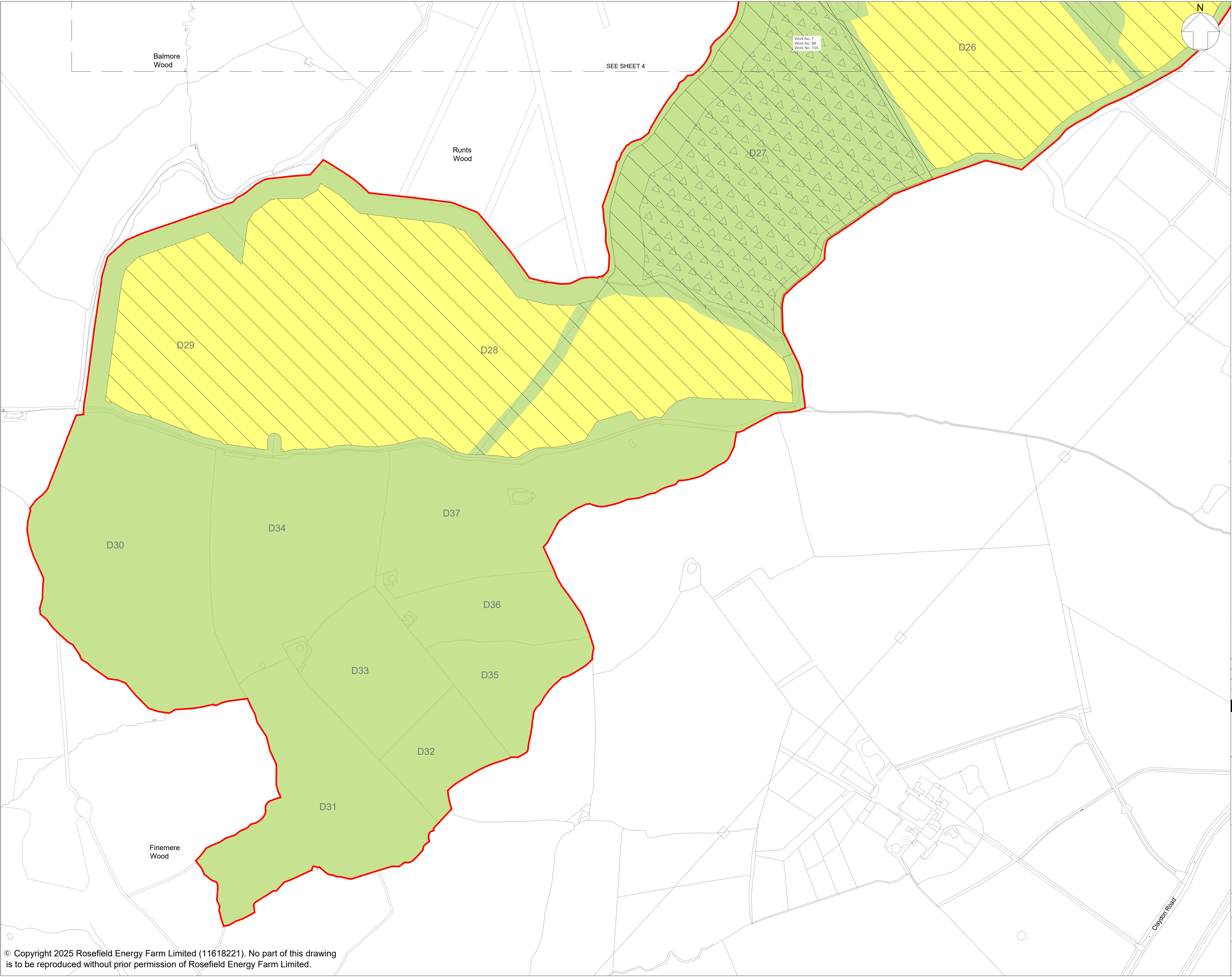
DATE: OCT 2025

DRAWN: LDA

SCALE: 1:2,500 at A1

SCALE BAR:



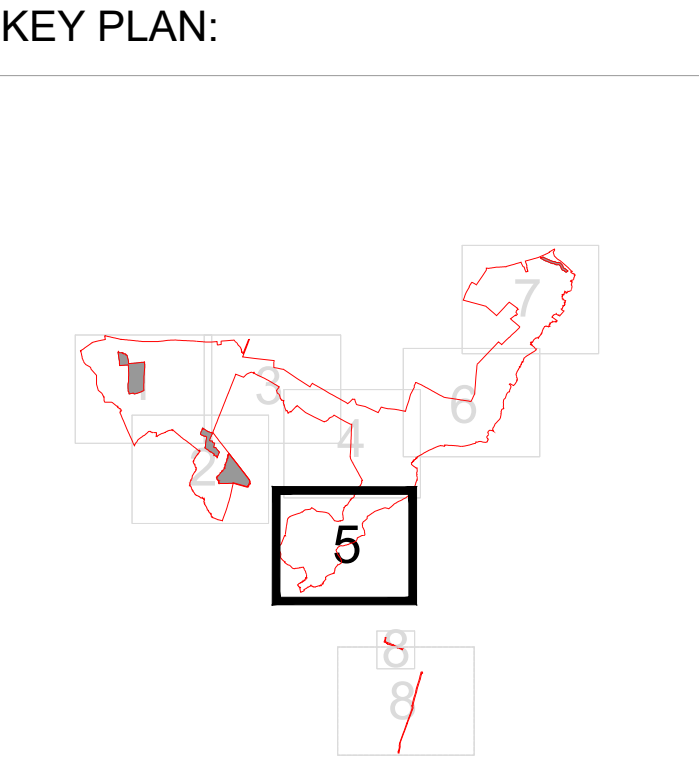


**LEGEND:**

- Order Limits
- Areas outside the Order Limits
- Work No. 1  
Ground-mounted Solar PV Generating Station  
(Up to 3.5m)
- Work No. 1  
Ground-mounted Solar PV Generating Station  
(Up to 4.5m. Accounting for Flood Areas)
- Work No. 2A  
Rosefield Substation Compound
- Work No. 2B  
Abnormal Indivisible Load Corridor
- Work No. 3A  
Satellite Collector Compounds
- Work No. 3B  
Satellite Collector Compound Transformer
- Work No. 4  
Battery Energy Storage System (BESS)
- Work No. 5  
Main Collector Compound
- Work No. 6  
Grid Connection Cabling Corridor
- Work No. 7  
Interconnecting Cabling Corridor (s)
- Work No. 8A  
Primary Temporary Construction and  
Decommissioning Compounds
- Work No. 8B  
Secondary Temporary Construction and  
Decommissioning Compounds
- Work No. 9  
Highway Works
- Work No. 10A  
Green and Blue Infrastructure
- Work No. 10B  
Internal access to mitigation areas only

**NOTES:**

1. Refer to key plan for notes.



02	OCT 2025	UPDATES FOLLOWING S51 ADVICE	LDA	LDA	EDF
01	SEPT 2025	DICO SUBMISSION	LDA	LDA	EDF
REVISION	DATE	DESCRIPTION	DRAWN	CHECKED	APPROVED

Rosefield Solar Farm

**Rosefield**  
Solar Farm

DOCUMENT:  
**APPLICATION DRAWINGS  
FOR APPROVAL**

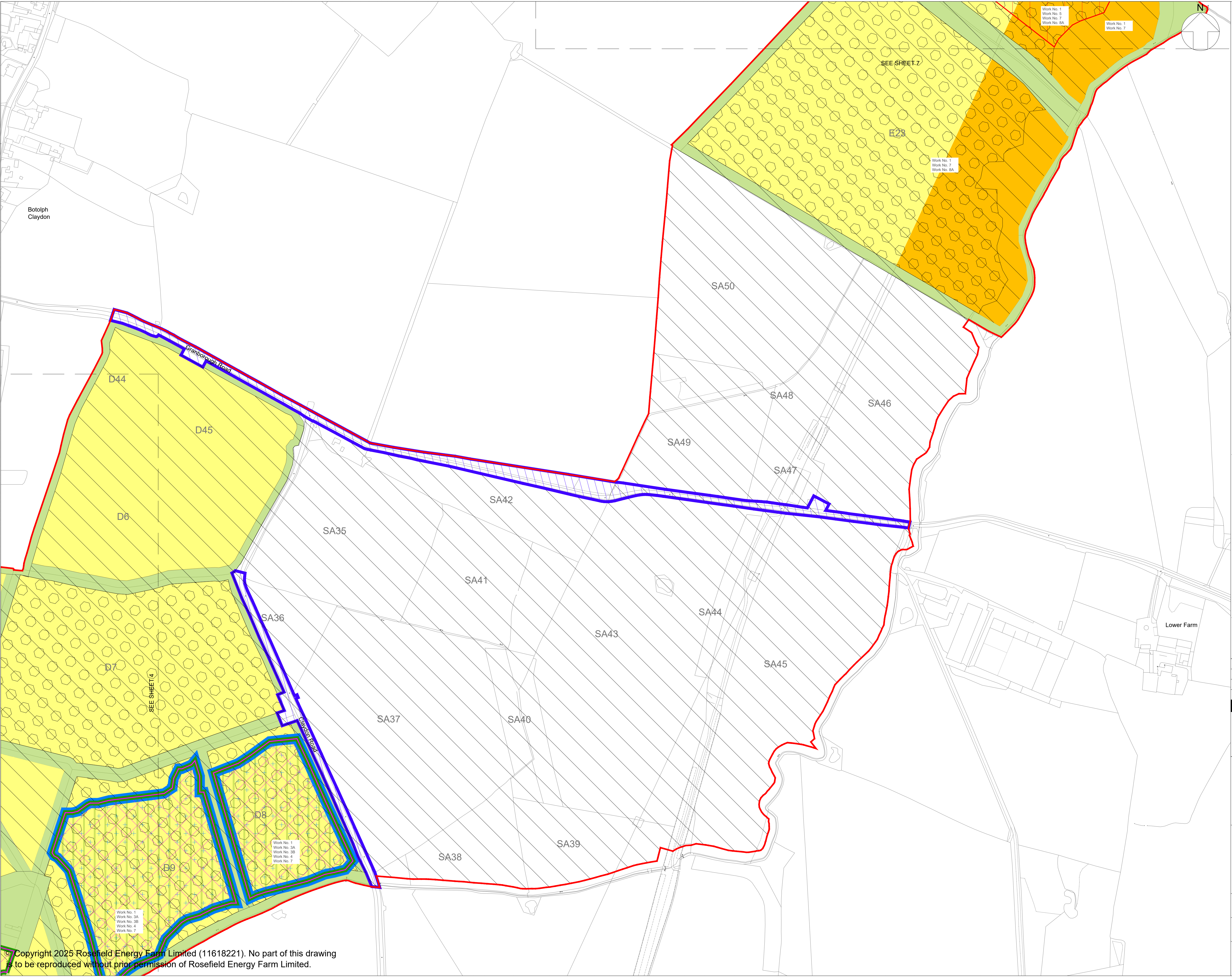
REGULATION 5(2)(j)

DRAWING TITLE:  
**WORKS PLANS  
SHEET 5 OF 8**

PIN REFERENCE NUMBER: EN010158/APP/2.3.2		REVISION: <b>02</b>
DATE: OCT 2025	DRAWN: LDA	SCALE: 1:2,500 at A1

SCALE BAR:





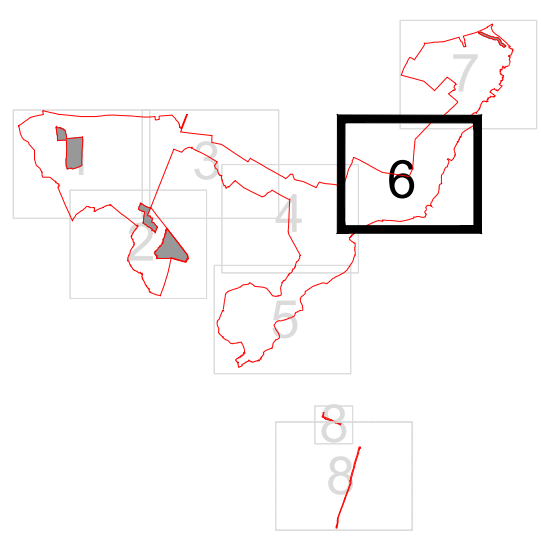
**LEGEND:**

- Order Limits
- Areas outside the Order Limits
- Work No. 1 Ground-mounted Solar PV Generating Station (Up to 3.5m)
- Work No. 1 Ground-mounted Solar PV Generating Station (Up to 4.5m. Accounting for Flood Areas)
- Work No. 2A Rosefield Substation Compound
- Work No. 2B Abnormal Indivisible Load Corridor
- Work No. 3A Satellite Collector Compounds
- Work No. 3B Satellite Collector Compound Transformer
- Work No. 4 Battery Energy Storage System (BESS)
- Work No. 5 Main Collector Compound
- Work No. 6 Grid Connection Cabling Corridor
- Work No. 7 Interconnecting Cabling Corridor (s)
- Work No. 8A Primary Temporary Construction and Decommissioning Compounds
- Work No. 8B Secondary Temporary Construction and Decommissioning Compounds
- Work No. 9 Highway Works
- Work No. 10A Green and Blue Infrastructure
- Work No. 10B Internal access to mitigation areas only

**NOTES:**

1. Refer to key plan for notes.

**KEY PLAN:**



02	OCT 2025	UPDATES FOLLOWING S51 ADVICE	LDA	LDA	EDF
01	SEPT 2025	DICO SUBMISSION	LDA	LDA	EDF
REVISION	DATE	DESCRIPTION	DRAWN	CHECKED	APPROVED

Rosefield Solar Farm



DOCUMENT:  
**APPLICATION DRAWINGS  
FOR APPROVAL**

REGULATION 5(2)(j)

DRAWING TITLE:  
**WORKS PLANS  
SHEET 6 OF 8**

PIN REFERENCE NUMBER:  
EN010158/APP/2.3.2

REVISION:  
**02**

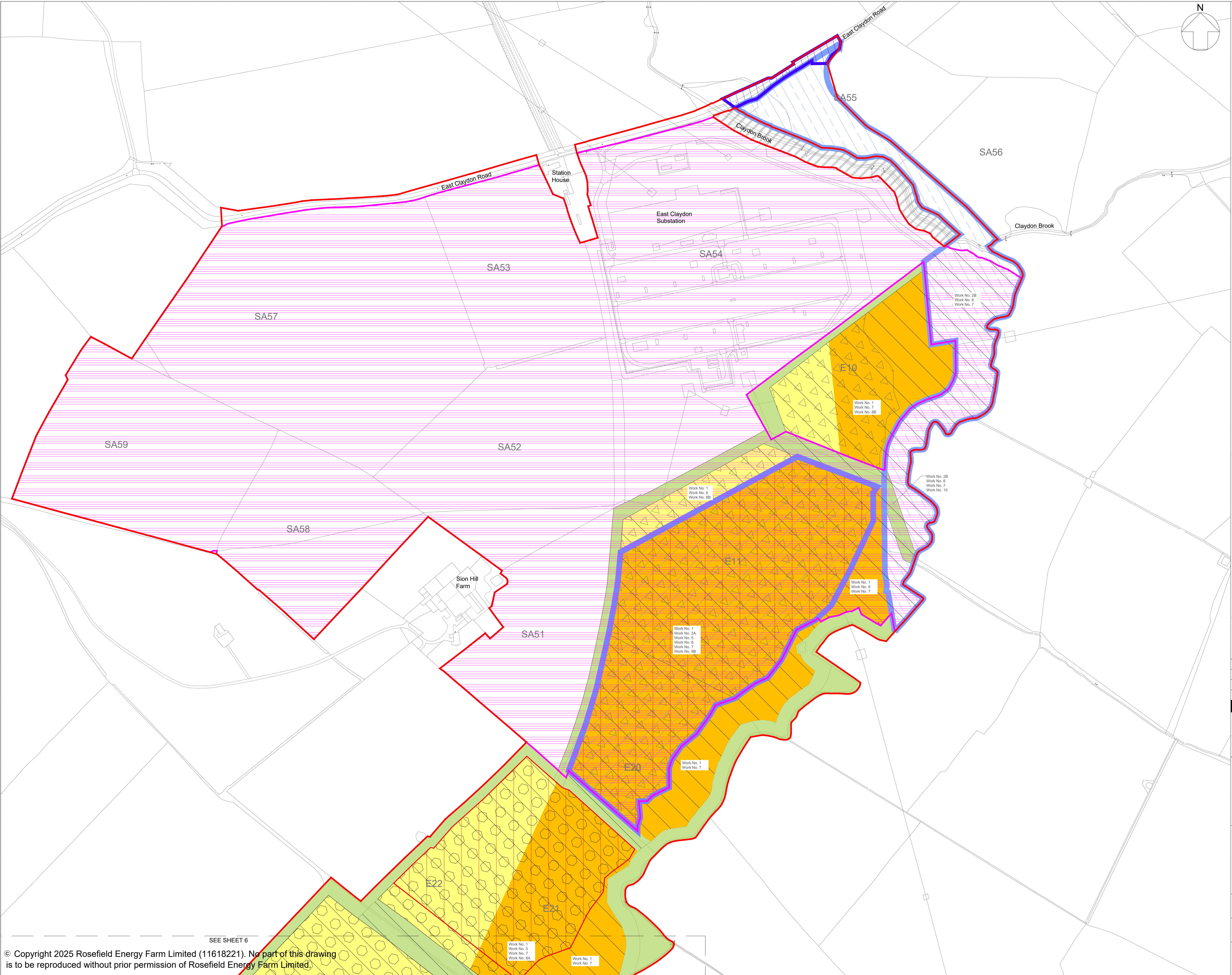
DATE:  
OCT 2025

DRAWN:  
LDA

SCALE:  
1:2,500 at A1

SCALE BAR:  
0 100m



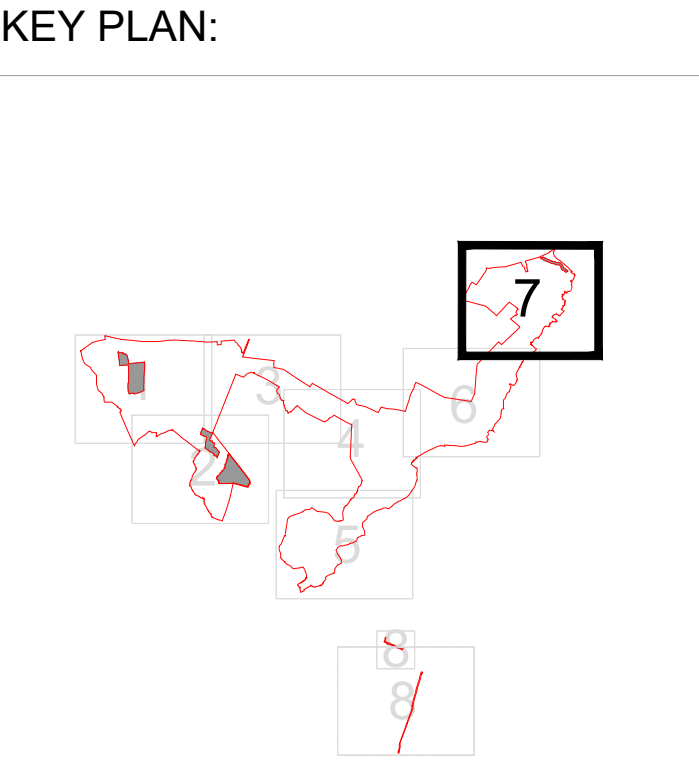


**LEGEND:**

- Order Limits
- Areas outside the Order Limits
- Work No. 1 Ground-mounted Solar PV Generating Station (Up to 3.5m)
- Work No. 1 Ground-mounted Solar PV Generating Station (Up to 4.5m. Accounting for Flood Areas)
- Work No. 2A Rosefield Substation Compound
- Work No. 2B Abnormal Indivisible Load Corridor
- Work No. 3A Satellite Collector Compounds
- Work No. 3B Satellite Collector Compound Transformer
- Work No. 4 Battery Energy Storage System (BESS)
- Work No. 5 Main Collector Compound
- Work No. 6 Grid Connection Cabling Corridor
- Work No. 7 Interconnecting Cabling Corridor (s)
- Work No. 8A Primary Temporary Construction and Decommissioning Compounds
- Work No. 8B Secondary Temporary Construction and Decommissioning Compounds
- Work No. 9 Highway Works
- Work No. 10A Green and Blue Infrastructure
- Work No. 10B Internal access to mitigation areas only

**NOTES:**

1. Refer to key plan for notes.



02	OCT 2025	UPDATES FOLLOWING S51 ADVICE	LDA	LDA	EDF
01	SEPT 2025	DICO SUBMISSION	LDA	LDA	EDF
REVISION	DATE	DESCRIPTION	DRAWN	CHECKED	APPROVED

Rosefield Solar Farm

DOCUMENT:  
**APPLICATION DRAWINGS FOR APPROVAL**

REGULATION 5(2)(j))

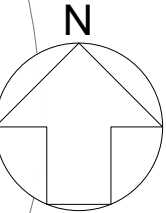
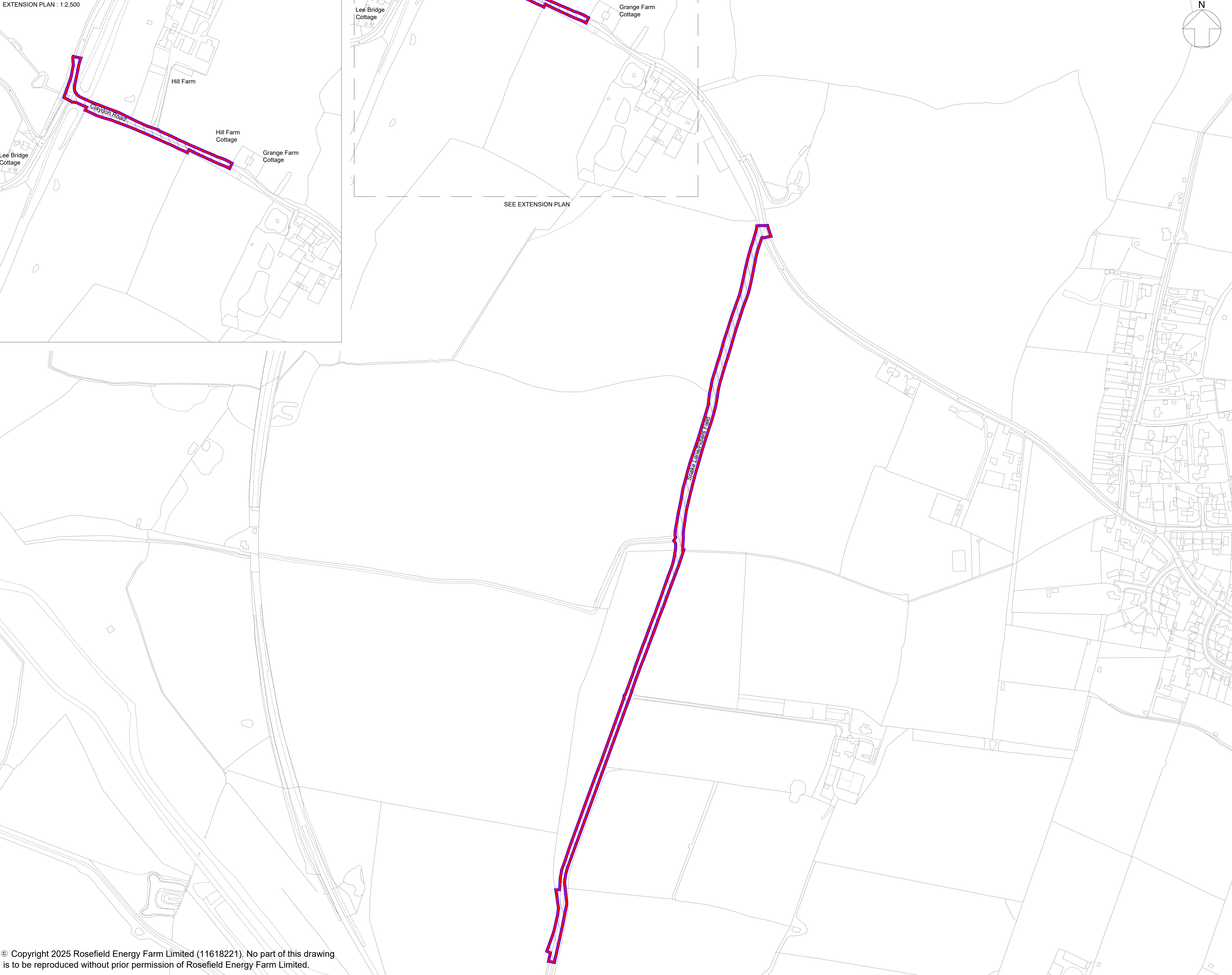
DRAWING TITLE:  
**WORKS PLANS SHEET 7 OF 8**

PIN REFERENCE NUMBER: EN010158/APP/2.3.2	REVISION: <b>02</b>	
DATE: OCT 2025	DRAWN: LDA	SCALE: 1:2,500 at A1

SCALE BAR:



EXTENSION PLAN : 1:2,500



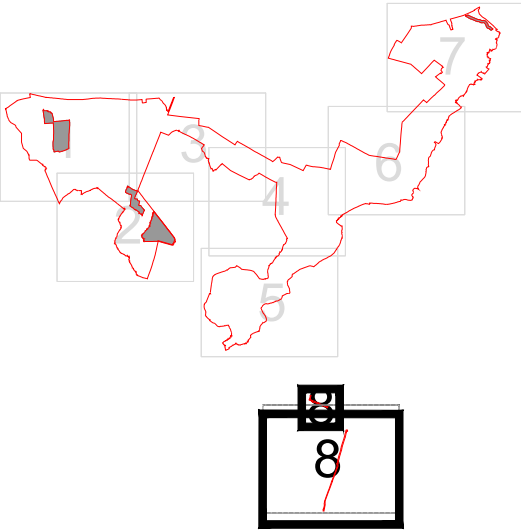
LEGEND:

- Order Limits
- Areas outside the Order Limits
- Work No. 1  
Ground-mounted Solar PV Generating Station  
(Up to 3.5m)
- Work No. 1  
Ground-mounted Solar PV Generating Station  
(Up to 4.5m. Accounting for Flood Areas)
- Work No. 2A  
Rosefield Substation Compound
- Work No. 2B  
Abnormal Indivisible Load Corridor
- Work No. 3A  
Satellite Collector Compounds
- Work No. 3B  
Satellite Collector Compound Transformer
- Work No. 4  
Battery Energy Storage System (BESS)
- Work No. 5  
Main Collector Compound
- Work No. 6  
Grid Connection Cabling Corridor
- Work No. 7  
Interconnecting Cabling Corridor (s)
- Work No. 8A  
Primary Temporary Construction and  
Decommissioning Compounds
- Work No. 8B  
Secondary Temporary Construction and  
Decommissioning Compounds
- Work No. 9  
Highway Works
- Work No. 10A  
Green and Blue Infrastructure
- Work No. 10B  
Internal access to mitigation areas only

NOTES:

- Refer to key plan for notes.

KEY PLAN:



02	OCT 2025	UPDATES FOLLOWING S51 ADVICE	LDA	LDA	EDF
01	SEPT 2025	DICO SUBMISSION	LDA	LDA	EDF
REVISION	DATE	DESCRIPTION	DRAWN	CHECKED	APPROVED

Rosefield Solar Farm



DOCUMENT:  
APPLICATION DRAWINGS  
FOR APPROVAL

REGULATION 5(2)(j)

DRAWING TITLE:  
WORKS PLANS  
SHEET 8 OF 8

PIN REFERENCE NUMBER:  
EN010158/APP/2.3.2

REVISION:  
02

DATE:  
OCT 2025

DRAWN:  
LDA

SCALE:  
1:2,500 at A1

SCALE BAR:



© Copyright 2025 Rosefield Energy Farm Limited (11618221). No part of this drawing is to be reproduced without prior permission of Rosefield Energy Farm Limited.

This drawing may contain: Ordnance Survey material by permission of Ordnance Survey on behalf of the Controller of His Majesty's Stationery Office © Crown Copyright 2024. All rights reserved. Reference number 0100031673  
OS Open data / © Natural England / © DEFRA / © DECC / © English Heritage. Aerial Photography - ESRI, DigitalGlobe, GEOEye, i-cubed, USDA FSA, USGD, AEX, Getmapping, Aerogrid, IGN, JGP, swisstopo, the GIS User Community



